

1. MODULATING OUTPUTS

- 1, 2: (0-10 VC) Can be used for a modulating boiler or valve
- 3, 4: (0-10 VDC) Can be used for a modulating boiler or valve
- 5, 6: (0-10 VDC) Can be used for a modulating boiler or valve

2. DEMAND INPUTS

- 7,8: Apply a demand from a dry contact or 24VAC
- 9,10: Apply a demand from a dry contact or 24VAC

3. SENSOR INPUTS

- 13, 15: Boiler Temperature in Staging Mode. Setpoint 1 temperature in DiFF/Dual Setpoint Mode.
- 14, 15: System temperature in Mixing Mode. Setpoint 2 temperature in DiFF/Dual Setpoint mode.
- 16, 18: Outdoor temperature.
- 17, 18: Used for DHW tank temperature.

4. STAGING OUTPUTS

- 1, 2: Boiler Stage 1 (Primary) or Stage 5, 9, 13 (Secondary)
- 3, 4: Boiler Stage 2 (Primary) or Stage 6, 10, 14 (Secondary)
- 5, 6: Boiler Stage 3 (Primary) or Stage 7, 11, 15 (Secondary)
- 7, 9: Boiler Stage 4 (Primary) or Stage 8, 12, 16 (Secondary)

5. AUXILIARY OUTPUTS

- 9, 10: Aux 1 - Can be used as a system pump, Injection pump, DHW or boiler.
- 11, 12: Aux 2 - Can be used as a system pump, DHW pump, Boiler pump, Valve up or down
- 13, 14: Aux 3 - Can be used as a system pump, DHW pump, Boiler pump, Valve up or down

6. INPUT POWER

- 15, 16, 17: 120 VAC +/- 10% 50/60Hz 0.25A Max



SensorLinx™ Mobile App

The Sensorlinx™ mobile app is available for Apple iOS (APP Store) and Android® devices (Google Play). The mobile app allows for remote monitoring and control for HBX Controls devices.

Now available on the Apple App Store and Google Play



HAVING TROUBLE CONNECTING?



WI-FI

Devices must be connected to a 2.4Ghz network

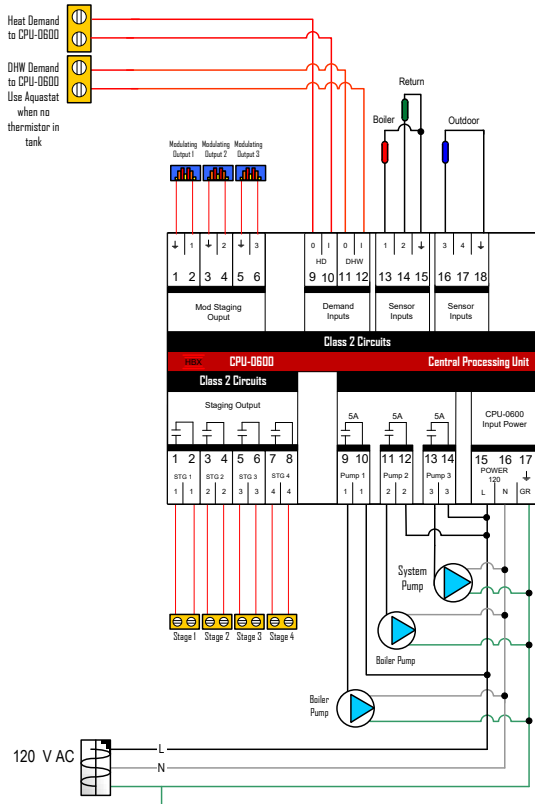


NETWORKING

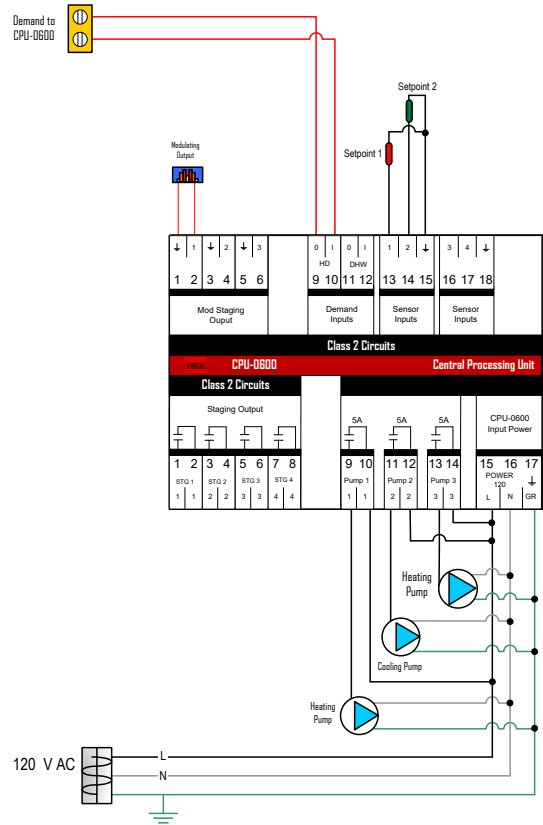
Verify that outgoing port 1500 is not blocked on the network or router

ISSUE	POSSIBLE CAUSES & RESOLUTIONS	ISSUE	POSSIBLE CAUSES & RESOLUTIONS
Program: Staging		Program: Differential Setpoint	
Control won't turn on boiler(s)	<ul style="list-style-type: none"> • Check if there is heating demand on pins 9-10 • Check boiler setup settings • Check WWSD • Check wiring for demands and boiler outputs 	Control won't turn on pump(s)	<ul style="list-style-type: none"> • Check if there is demand on pins 9-10 • Check SP1 or SP2 differential settings • Check pump setup settings
Boiler Cycling too frequently	<ul style="list-style-type: none"> • Check boiler differential settings • Check boiler lag time 	Setpoint temperatures showing dashes	<ul style="list-style-type: none"> • Check setpoint sensor wiring
Abnormal boiler target	<ul style="list-style-type: none"> • Check outdoor reset settings 	Program: Dual Setpoint	
Control won't go into heating	<ul style="list-style-type: none"> • Check if there is a demand on pin 9-10 • Check WWSD 	Setpoint temperatures showing dashes	<ul style="list-style-type: none"> • Check setpoint sensor wiring
No heat demand is present	<ul style="list-style-type: none"> • Check is there a demand on pins 9-10 • Check if permanent heat demand is on 	Setpoints cycling too frequently	<ul style="list-style-type: none"> • Check differential settings
Control is WWSD when outside temperature is below WWSD	<ul style="list-style-type: none"> • Check that outdoor sensor is connected to thermistor inputs • Check outdoor sensor placement. Outdoor sensor should not be in direct sunlight. 	Heating Setpoint is not turning on	<ul style="list-style-type: none"> • Check if cooling logic setting and turn it off
Boiler/DHW/Outdoor temperatures showing dashes	<ul style="list-style-type: none"> • Check if boiler/dhw/outdoor sensors are connected to thermistor inputs (check wiring) 	Program: Pump Sequencer	
Pump(s) not turning on	<ul style="list-style-type: none"> • Check pump setup options to verify the correct pump are selected • Verify heating demands are present • Check WWSD • Check wiring 	Control won't turn on pumps	<ul style="list-style-type: none"> • Check if there is demand on pins 9-10 and flow proof input on pins 11-12
Boiler are turning on at the same time	<ul style="list-style-type: none"> • Check FAST DHW setting and turn it off 	Pump(s) are running all the time	<ul style="list-style-type: none"> • Check if manual override settings
Program: Mixing		Pump(s) are not sequencing	<ul style="list-style-type: none"> • Check sequencing settings for rotation hours or rotation cycles.
Mixing device (injection, floating action, modulating valve) will not turn on	<ul style="list-style-type: none"> • Check wiring • Control is in boiler protection (you can turn this boiler protection off if needed) 		
System temperature fluctuating	<ul style="list-style-type: none"> • Check outdoor reset values 		
Control won't turn on boiler(s)	<ul style="list-style-type: none"> • Check if there is heating demand on pins 9-10 • Check boiler setup settings • Check WWSD • Check wiring for demands and boiler outputs 		
Pump(s) not turning on	<ul style="list-style-type: none"> • Check pump setup options to verify the correct pump are selected • Verify heating demands are present • Check WWSD • Check wiring 		

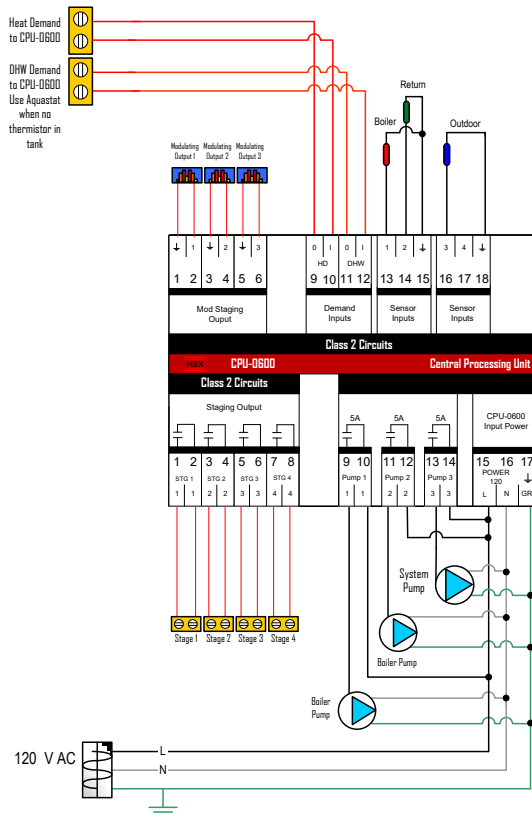
PROGRAM: STAGING



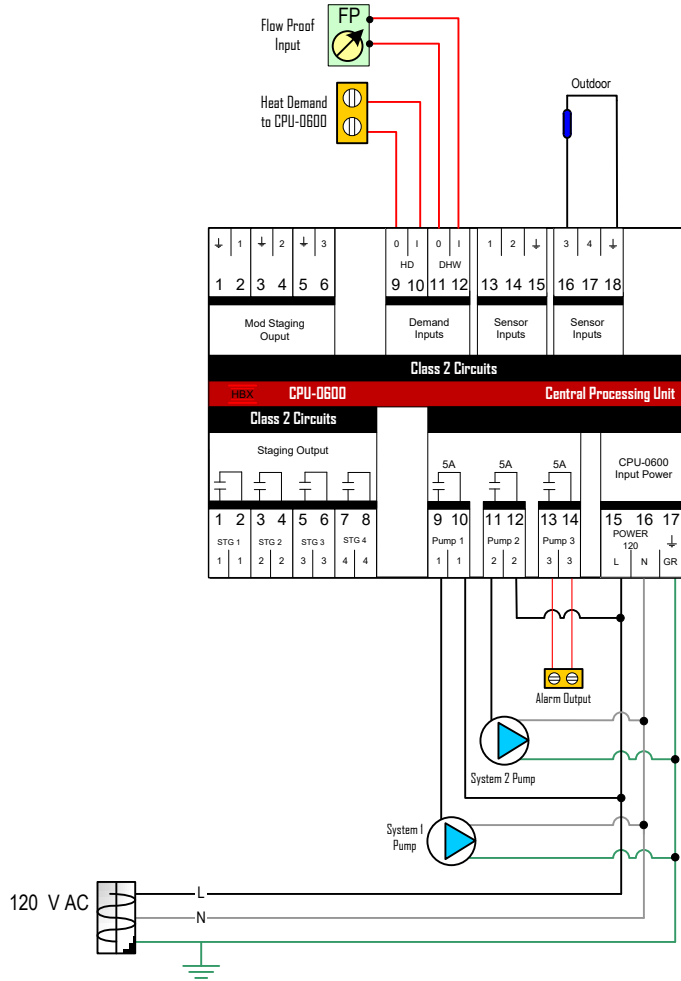
PROGRAM: DIFFERENTIAL



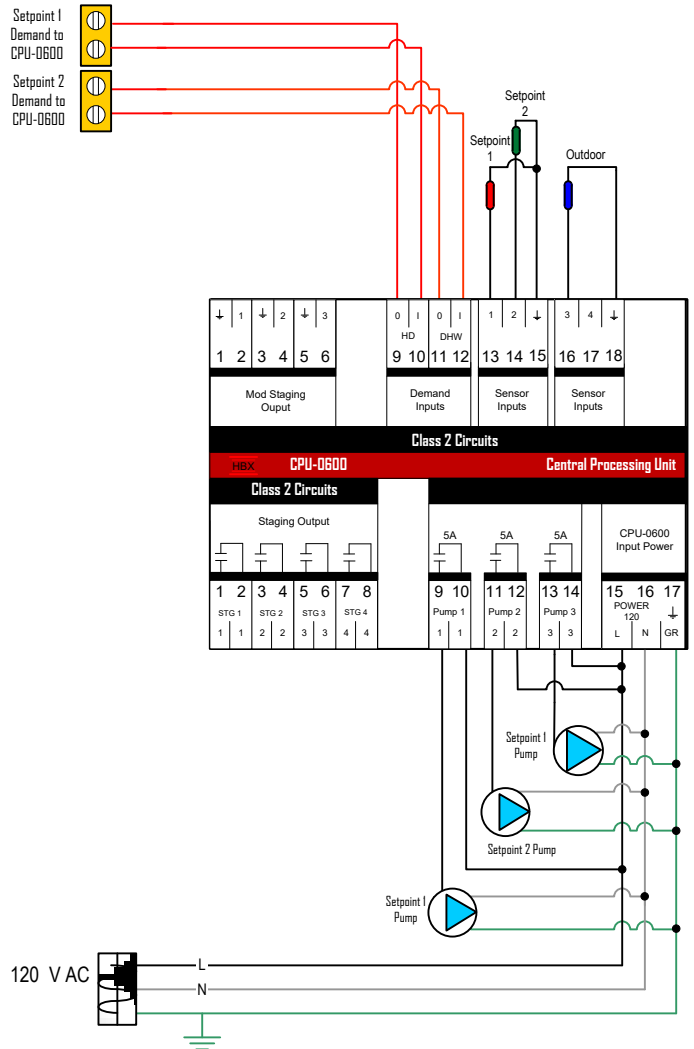
PROGRAM: MIXING



PROGRAM: PUMP SEQUENCER



PROGRAM: DUAL SETPOINT



Need Help?

Call Tech Support Toll Free:
1 (855) 410-2341
support@hbxcontrols.com



Scan for
Manual